

Ancon BT Galvanised Couplers

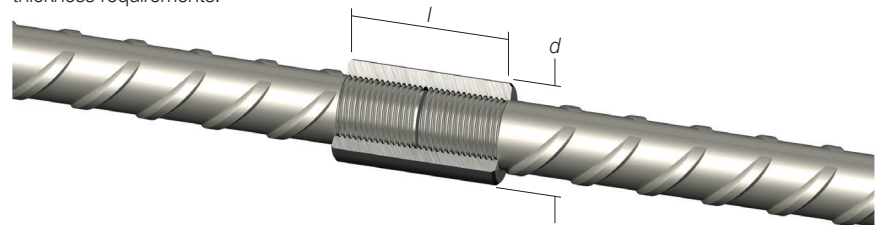
Ancon BT Galvanised Couplers are an extension to our range of BT reinforcing bar couplers and are generally used to join lengths of galvanised reinforcing bar that have been threaded at our facilities. They are suitable for projects of any size where the strength of the connection is required to match or exceed that of the parent bars, including large scale, high volume coupler applications.

The threading process needs to be performed on pre-galvanised bar which removes the protective coating at the location of the thread. The thread can be treated with anti-corrosion spray paint upon request. Galvanising of bars after threading is strictly prohibited.

As the standard Hot Dip Galvanising (HDG) process tends to clog up the threads, Leviat uses a Thermal Diffusion Galvanising (TDG) process with a coating thickness of 55 microns.

A 50 micron zinc coating applied using TDG achieves a greater performance than what is required by AS/NZS 4680 for a 70 micron HDG zinc coating. Please refer to the ArmorGalv Technical Data Sheet and TDG coating thickness requirements.

This technical data sheet should be read in conjunction with the current published version of the Ancon Reinforcing Bar Couplers brochure.



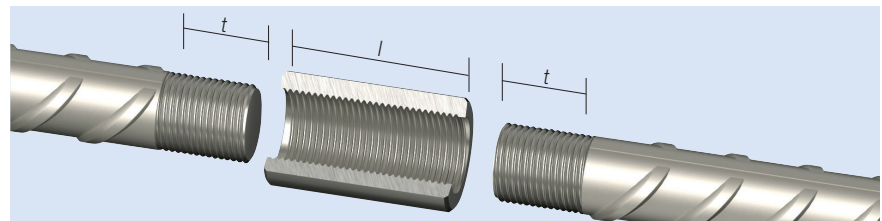
Dimensions

Bar Diameter		12	16	20	24	28	32	36	40	50
External Diameter	<i>d</i>	22	30	35	42	48	55	60	65	80
Coupler Length	<i>l</i>	28	40	48	60	66	78*	92*	98*	122*
Type A Thread Length	<i>t</i>	14	20	24	30	33	36	42	45	56
Thread Size		M14	M20	M24	M30	M33	M36	M42	M45	M56
Thread Pitch		2.0	2.5	3.0	3.5	3.5	4.0	4.5	4.5	5.5
Weight (kg)		0.04	0.14	0.22	0.37	0.54	0.91	1.17	1.44	2.49
Part No-Coupler		BTC12AG	BTC16AG	BTC20AG	BTC24AG	BTC28AG	BTC32AG	BTC36AG	BTC40AG	BTC50AG

*Ancon BT Couplers size 32 and above include a guiding chamfer on one end to assist with the installation of heavier bars.

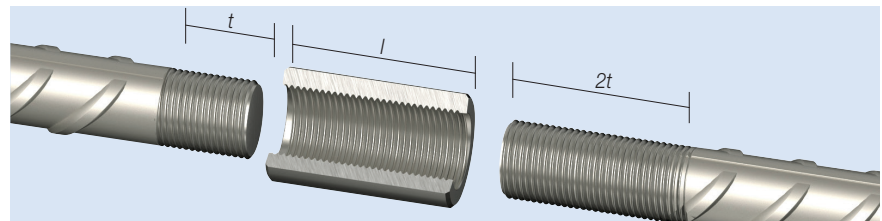
Ancon BT Galvanised Type A

The Type A connection utilises an internally threaded coupler to join two cold-forged and threaded bar ends together. Each bar end is threaded to half the length of the coupler. Type A connections are used where the continuation bar can be rotated.



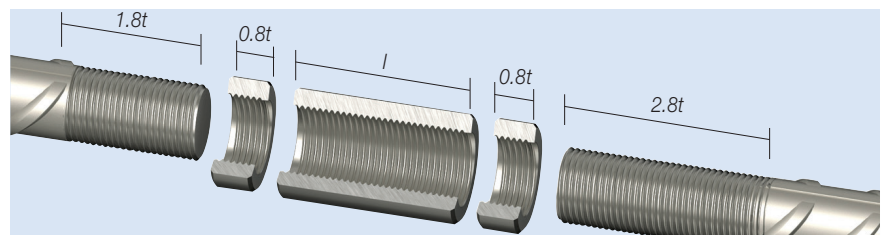
Ancon BT Galvanised Type B

The Type B connection utilises the same coupler as for the Type A, the difference being one bar end is threaded for the full coupler length. Type B connections are used where the continuation bar can be rotated for no more than one revolution.



Ancon BT Galvanised Type C

The Type C connection utilises the same coupler as for the Type A, together with locknuts and longer threads to the bar ends. Type C connections are used where the continuation bar cannot be rotated.



Important Note: The additional thread lengths beyond the final coupler location on Type B and Type C systems are non-structural and are to be used for positioning purposes only.