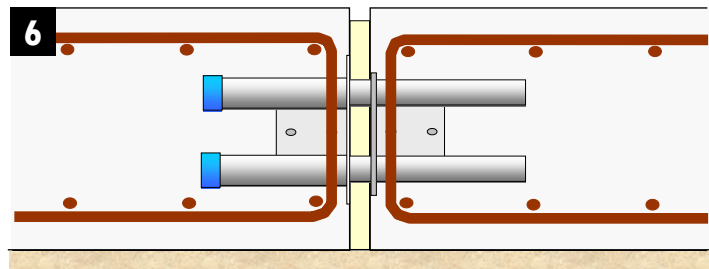
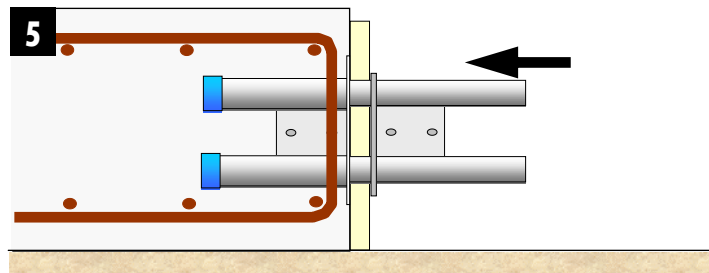
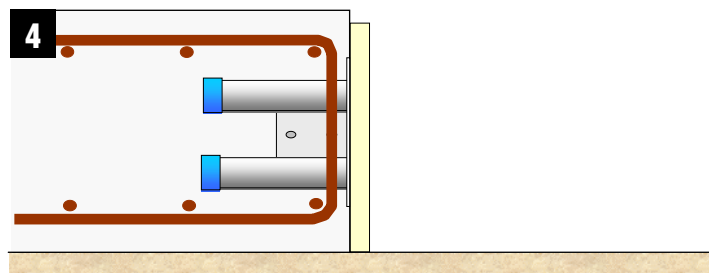
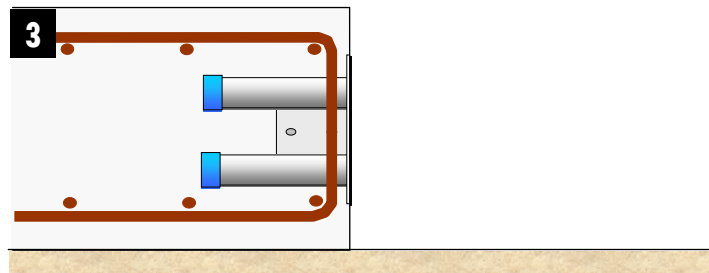
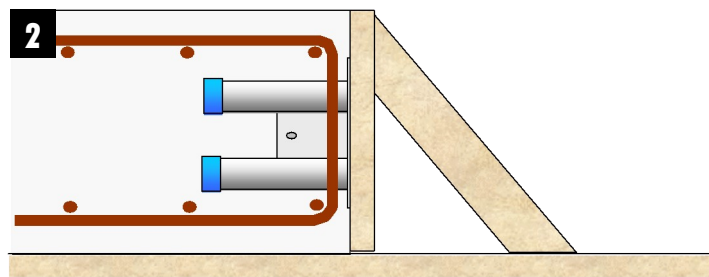
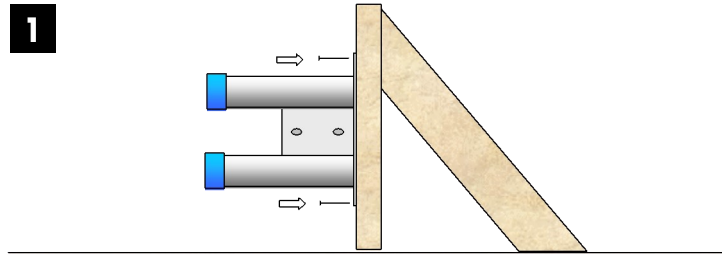


DSD/DSDQ/ESD/ESDQ

Installation



1 Nail sleeve to formwork. Do not remove sticky label, this prevents ingress of concrete into the sleeve

2 Fix the local reinforcement around the sleeve and pour the concrete

3 When the concrete has achieved sufficient strength, strike shuttering and peel off or puncture the label

4 Position compressible joint filler

5 Push the dowel component through the filler until it is fully located in the sleeve

6 Fix the local reinforcement around the sleeve and pour the concrete