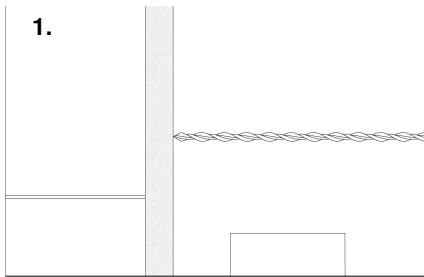


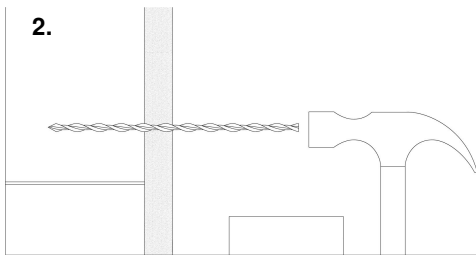
INSTALLATION GUIDE
STAIPIX TJ2 WALL TIES
 FOR THIN-JOINT BLOCKWORK



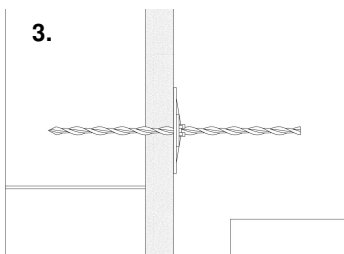
INSTALLATION PROCEDURE



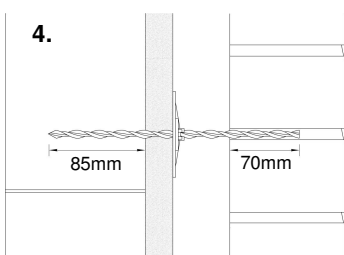
Keep the brickwork one course clear during installation of the ties. Position the tie against the inner leaf so that the outer end will be located in the bed joint of the external leaf.



Hammer the tie, through the insulation, and into the blockwork to the correct embedment.



Install a black Staifix Insulation Retaining Clip to restrain the insulation.



Build into the bed joint of the outer leaf ensuring the tie is surrounded by mortar.

The Staifix-Thor Helical TJ2 Tie hammers directly into aerated concrete blocks. It is ideal for thin-joint blockwork and other applications where the joints in the inner and outer leaves of masonry are not aligned.

The TJ2 is suitable for housing and small commercial developments. It meets the requirements of the NHBC, BS EN 845-1 and BS 5628-1 as a type 2, 3 or 4 wall tie depending on the block used (see table below).

TIE LENGTHS	CAVITY WIDTHS
205 mm	50 mm
230 mm	75 mm
255 mm	100 mm
280 mm	125 mm
305 mm	150 mm

BLOCKS STRENGTH N/ MM ²	TIE TYPE TO BS 5628-1	
	CAVITIES LESS THAN 100MM	CAVITY OF 125MM
2.8	4	4
3.5 - 4.0	3	4
7.0 - 10.5	2	3



Ancon Building Products
 Tel: 1300 304 320
 Email: info@anconbp.com.au
 Web: www.anconbp.com.au

© Ancon Building Products, 2001

The construction applications and details provided in this guide are indicative only. In every case installation should be entrusted to appropriately qualified and experienced persons. Normal handling precautions should be taken to avoid physical injury. Ancon Building Products cannot be held responsible for any injury as a result of using our products, unless such injury arises as a result of our negligence.